



# Battery Master Switch Double Pole 250A

**CODE NUMBER:** 500009

**GENERAL**

Removable heavy duty handle with retaining chain. Includes weather protective boot and seal.

**ELECTRICAL**

Rated Voltage: 48VDC maximum  
Rated Current: 250/2500 Amps sustained/5 secs  
Configuration: Normally Open (N/O)

**PHYSICAL**

Termination: M10 copper studs  
Stud Torque: 15 ± 1.0 Nm  
Contacts: Copper  
Hardware: Steel nuts and washers  
Construction: Reinforced plastic body with zinc plated stamped steel frame and handle.

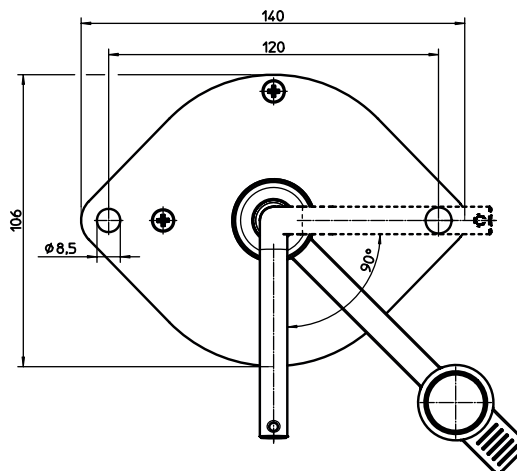
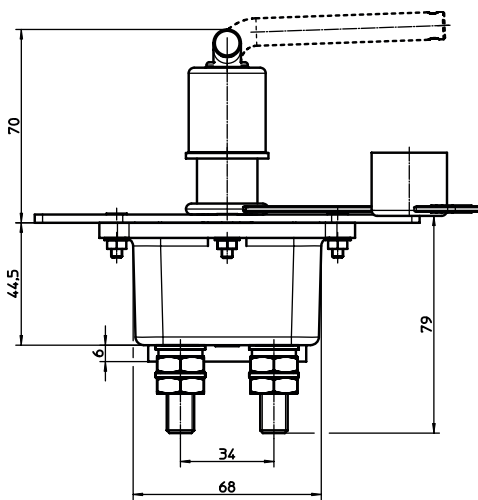
Environmental: IP66  
Operating Temp: -40°C to +85°C  
Dimensions: 140mmL x 106mmW x 150mmH  
Weight (nominal): 1 Kilogram

**SPARE PARTS**

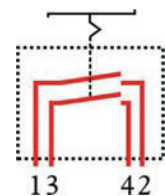
Handle: Order no. 520029  
Handle, chain, boot and strap: Order no. 520020  
Boot and strap: Order no. 520003



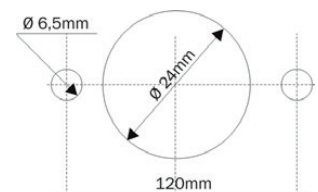
Designed for switching high current loads in various automotive, commercial and industrial vehicles. This high performance switch is constructed from quality materials and sealed to protect from harsh environmental conditions.



Connection



Fixing



Proudly distributed by:



16 Parkinson Lane  
O'Connor WA 6163  
Australia

**Phone** +61 8 9331 3100  
**Fax** +61 8 9331 5150  
**Email** [mail@amelec.com.au](mailto:mail@amelec.com.au)  
**Web** [www.amelec.com.au](http://www.amelec.com.au)