

Battery Master Switch Single Pole 300A

CODE NUMBER: 500024

GENERAL

For safety reasons, key is removable in OFF position only.

ELECTRICAL

Rated Voltage: 48VDC maximum
 Rated Current: 300/3000 Amps sustained/5 secs
 Configuration: Normally Open (N/O)

PHYSICAL

Termination: M10 copper studs
 Stud Torque: 15 ± 1.0 Nm
 Contacts: Copper
 Hardware: Brass nuts and washers
 Construction: Reinforced plastic body with zinc plated die cast frame and stainless key barrel.

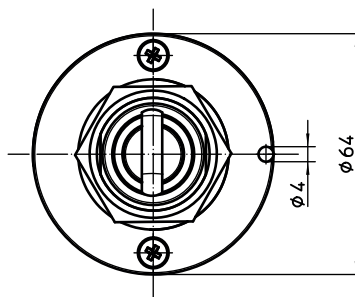
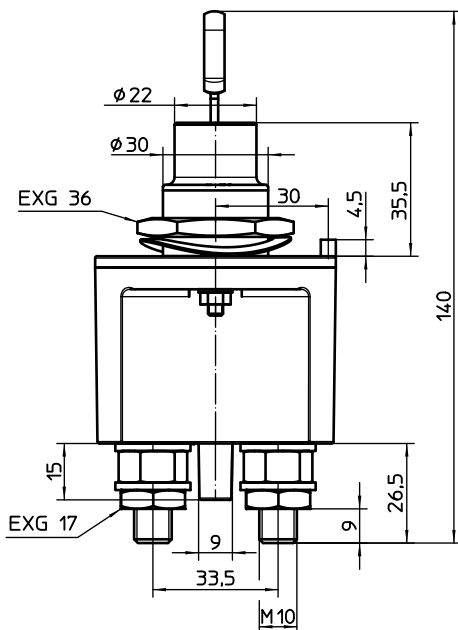
Environmental: IP63
 Operating Temp: -40°C to $+85^{\circ}\text{C}$
 Dimensions: 64mmL x 64mmW x 140mmH
 Weight (nominal): 430 Grams (with key)

SPARE PARTS

Handle: Order no. 520000 (code required)



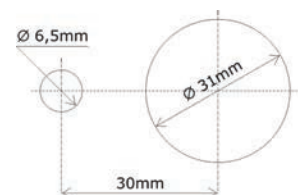
A lockable, robust battery switch designed for heavy duty switching applications in automotive, commercial and industrial vehicles. Featuring removable key, anti-rotation stop, die cast frame, all in a compact housing.



Connection



Fixing



Proudly distributed by:



16 Parkinson Lane
 O'Connor WA 6163
 Australia

Phone +61 8 9331 3100
Fax +61 8 9331 5150
Email mail@amelec.com.au
Web www.amelec.com.au