



Battery Master Switch Single Pole 150A

CODE NUMBER: 530100

GENERAL

Fixed handle with ergonomic grip is removable for installation.

Tested to 200 hours salt spray resistance.

ELECTRICAL

Rated Voltage: 48VDC maximum

Rated Current: 150/1000 Amps sustained/5 secs

Configuration: Normally Open (N/O)

PHYSICAL

Termination: M10 copper studs

Stud Torque: 9 ± 1.0 Nm

Contacts: Copper

Hardware: Brass nuts and washers

Construction: Reinforced plastic body with zinc plated die cast frame and thermoplastic handle.

Environmental: IP65

Operating Temp: -40°C to $+85^{\circ}\text{C}$

Dimensions: 80mmL x 80mmW x 97mmH

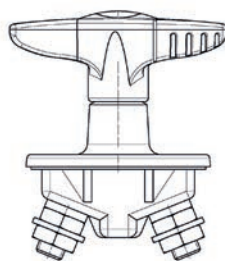
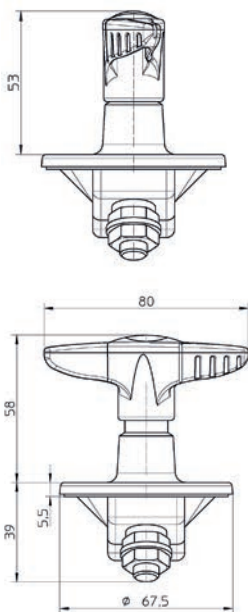
Weight (nominal): 240 Grams



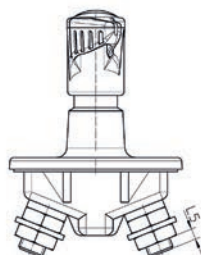
A robust device ideal for a multitude of heavy current switching applications in automotive, commercial and industrial vehicles. Constructed from quality materials and sealed to protect from harsh environmental conditions.

SPARE PARTS

Handle: Order no. 580011

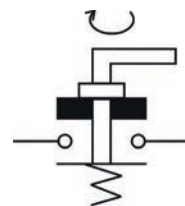


CLOSED

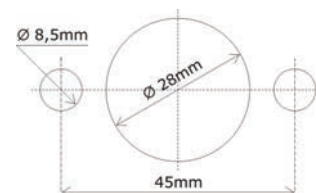


OPEN

Connection



Fixing



Proudly distributed by:



16 Parkinson Lane
O'Connor WA 6163
Australia

Phone +61 8 9331 3100
Fax +61 8 9331 5150
Email mail@amelec.com.au
Web www.amelec.com.au