



Carling Technologies BD-Series battery disconnect switch is designed to minimize battery drain, impart maintenance personnel safety, and when used in conjunction with a pad lock, provide vehicle theft protection.

**Product Highlights:**

- 300 Amps
- 12VDC/24VDC
- IP67 Sealing Protection
- Lock Compatible

**Part Numbers:**

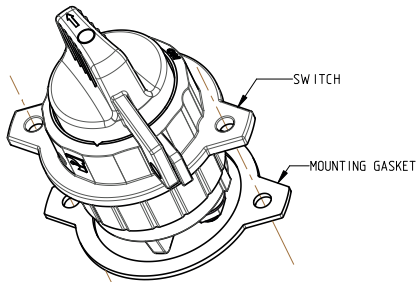
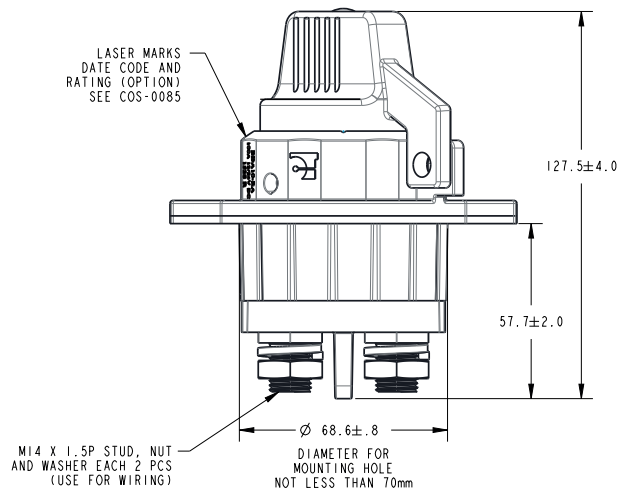
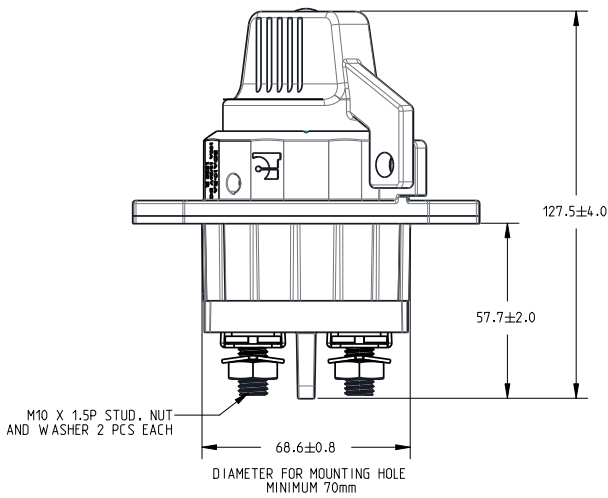
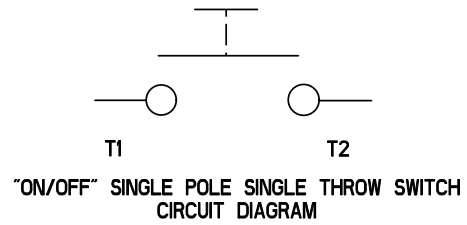
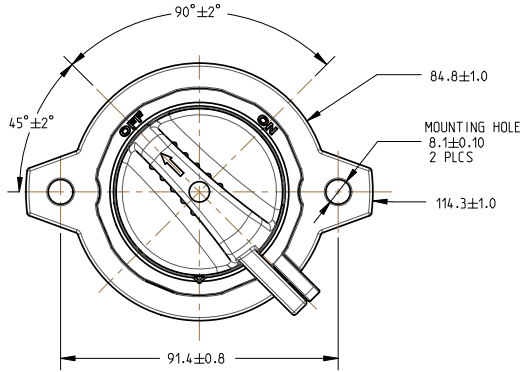
- BDB10-BA Black knob
- BDB10-RA Red knob
- BDB10-YA Yellow knob

**General Specifications:**

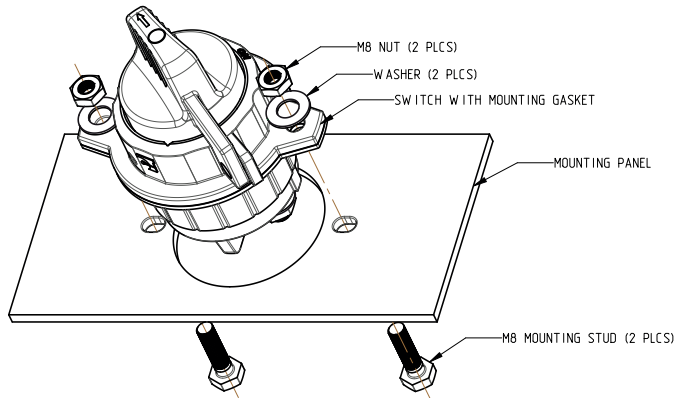
Electrical	
Application Voltage	DC Rated voltage: 12VDC / 24VDC Range of operating voltage: 12VDC: min 9VDC, max 16VDC; 24VDC: min 18VDC, max 32VDC
Continuous Current	12VDC/24VDC: 300A.
Intermittent Current	12VDC/24VDC: 1500A, 3 seconds on, 60 seconds off, 10 cycles: voltage drop should not exceed 400mV between main terminals.
Physical	
Number of Poles	Single Pole
Wiring Terminals	Line/Load terminal: M10 brass nuts; Torque value: (6~8 Nm).
Mounting	M8 Iron nut, torque value: 10-15 Nm.
Colour	<b>Body:</b> Black <b>Actuator:</b> Black, red or yellow knob, with white color "Arrow" legends.
Weight	340g
Materials	Base (PBT glass filled), Bracket & Knob (nylon glass filled), Studs (Copper + Tin plating), Nuts (Brass).
Endurance	2 seconds ON and 6 seconds OFF per operation, load with rated current & voltage. 12V test @14V±0.1V; 24V test @28V±0.2V 3,000 cycles: 300A current
Environmental	
Operating Temp.	-40 °C to +85 °C.
Dust/Waterproof	IP 67, IEC 60529 or GB4208.
UV Protection	ASTM G155-05a, cycle 11, 300 hr Xenon Arc, 1.4W/(m <sup>2</sup> ·nm ), wavelength 420 nm.



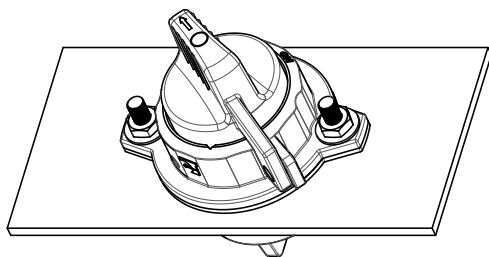
**Dimensional Specifications (mm):**



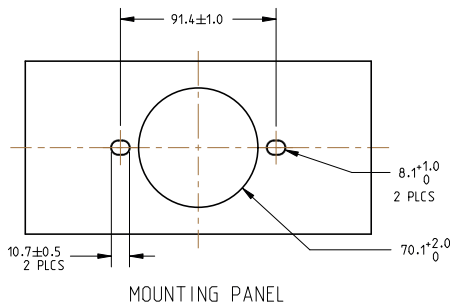
MOUNTING STEP 1: ATTACH MOUNTING GASKET WITH THE SWITCH ORIENTATION AS SHOWN



MOUNTING STEP 2: ORIENT AS SHOWN AND INSTALL THE SWITCH IN MOUNTING PANEL HOLE; THEN INSERT STUDS AND WASHERS



MOUNTING STEP 3: TIGHTEN 2PCS M8 NUTS (REC. TORQUE [10-15Nm])



Notes: Switch can be mounted horizontally or vertically.

Proudly distributed by:



16 Parkinson Lane  
O'Connor WA 6163  
Australia

**Phone** +61 8 9331 3100  
**Fax** +61 8 9331 5150  
**Email** [mail@amelec.com.au](mailto:mail@amelec.com.au)  
**Web** [www.amelec.com.au](http://www.amelec.com.au)